

# Ballonvisa

Arrangert av kandidat 5

Trold Brønne

Geir Holsen



Fm Bb7

20

S. him - meln i det blå, og sol - a skul - le var - me øss og

Vo.

Glk.

Bb Tpt.

C Tu.

Pno.

Guit.

El. B.

Synth.

Vln.

Hd. Clp.

Ab Eb Eb C7 Fm

22 S. skinn - e Og vi sku ro - pe høgt så he - le verd - a sku for - stå at

Vo.

Glk.

Bb Tpt.

C Tu.

Pno.

Guit.

El. B.

Synth.

Vln.

Hd. Clp.

Detailed description of the musical score: The score is for a band and includes a vocal line (S.) with lyrics in Norwegian. The key signature has two flats (Bb and Eb), and the time signature is 4/4. The vocal line starts at measure 22. The lyrics are: "skinn - e Og vi sku ro - pe høgt så he - le verd - a sku for - stå at". Above the vocal line, the chords Ab, Eb, Eb, C7, and Fm are indicated. The instrumental parts include: Voice (Vo.) with block chords; Glockenspiel (Glk.) with rests; Bb Trumpet (Bb Tpt.) with rests; C Trumpet (C Tu.) with rests; Piano (Pno.) with a melodic line in the right hand and a bass line in the left hand; Guitar (Guit.) with rests; Electric Bass (El. B.) with a bass line; Synth. with rests; Violin (Vln.) with rests; and Hand Drums (Hd. Clp.) with rests. The piano part features a melodic line in the right hand and a bass line in the left hand. The guitar and electric bass parts have rests. The synth, violin, and hand drums parts also have rests.





29

Fm7                      Bb7                      Eb                      Bb7

S. går så lett i sund om it - te folk lar dom i fre. Og

Vo.

Glk.

Bb Tpt.

C Tu.

Pno.

Guit.

El. B.

Synth.

Vln.

Hd. Clp.





Fm7                      Bb7                      Eb                      Fm7                      Bb7

S. <sup>33</sup> stikk je hull i bal-long-del - din!"

Vo.

Glk. <sup>15</sup>

Bb Tpt.

C Tu.

Pno.

Guit. <sub>8</sub>

El. B. <sub>8</sub>

Synth.

Vln.

Hd. Clp.

E♭
E♭
C7
Fm
E♭7

S. <sup>36</sup>

Vo.

Glk. <sup>15</sup>

B♭ Tpt.

C Tu.

Pno.

Guit. <sup>8</sup>

El. B. <sup>8</sup>

Synth.

Vln.

Hd. Clp.

40

A $\flat$  E $\flat$  E $\flat$  C7 Fm B $\flat$ 7

S.

Vo.

Glk.

B $\flat$  Tpt.

C Tu.

Pno.

Guit.

El. B.

Synth.

Vln.

Hd. Clp.

Ab Eb AbMaj7 Gm7 C7 Fm7 Bb7

44

S.

Vo.

Glk. <sup>15</sup>

Bb Tpt.

C Tu.

Pno.

Guit. <sub>8</sub>

El. B. <sub>8</sub>

Synth.

Vln. <sup>6</sup>

Hd. Clp.

Fm Bb7

S. 2  
 æil - le bod - de på, og in - gen folk var fat - tig, in - gen

Vo.

Glk. 15

Bb Tpt.

C Tu.

Pno.

Guit. 8

El. B. 8

Synth.

Vln.

Hd. Clp.

E $\flat$ 
B $\flat$ 7
A $\flat$ Maj7
Gm7
C7
Fm7
B $\flat$ 7

48

S.

Vo.

Glk. <sup>15</sup>

B $\flat$  Tpt.

C Tu.

Pno.

Guit.

El. B. <sub>8</sub>

Synth.

Vln.

Hd. Clp.

Chord progression: Eb          Fm7          Bb7          Eb

52

S. *mf* For

Vo. *mf*

Glt. *mp*

Bb Tpt.

C Tu.

Pno.

Guit. *8*

El. B. *8*

Synth.

Vln.

Hd. Clp.

55

*E<sub>b</sub>* *C7* *Fm*

S. ver - da er en bal - long som vi sjøl må pas - se på, og

Vo.

Glk.

B $\flat$  Tpt.

C Tu.

Pno. *mf*

Guit. 8

El. B. 8 *mf*

Synth.

Vln.

Hd. Clp.



57

Bb7 Ab Eb

S. sjøl om vi er mang - e må vi de - le. Det

Vo.

Glk. 15

Bb Tpt.

C Tu.

Pno.

Guit. 8

El. B. 8

Synth.

Vln.

Hd. Clp.

59

E $\flat$  C7 Fm

S. skjønn - er itt - e vak - sne, men det er en mass - e små som

Vo.

Glk. 15

B $\flat$  Tpt.

C Tu.

Pno.

Guit. 8

El. B. 8

Synth.

Vln.

Hd. Clp.

61 Bb7 Ab Eb

S.   
 Vo.   
 Glk.   
 Bb Tpt.   
 C Tu.   
 Pno.   
 Guit.   
 El. B.   
 Synth.   
 Vln.   
 Hd. Clp.

A♭Maj7 Gm7 C7

S. <sup>63</sup> bal - long - er er slik - e en lyt var - a var - som med. Dom

Vo.

Glk. <sup>15</sup>

B♭ Tpt.

C Tu.

Pno.

Guit. <sub>8</sub>

El. B. <sub>8</sub>

Synth.

Vln.

Hd. Clp.

65

Fm7                      Bb7                      Eb                      Bb7

S.    går så lett i sund om it - te folk lar dom i fre.    Og

Vo.

Glk.    15

Bb Tpt.

C Tu.

Pno.

Guit.    8

El. B.    8

Synth.

Vln.

Hd. Clp.

AbMaj7 Gm7 C7

S. <sup>67</sup> it - te kæin vel no - en si at "halv-part - en er min! Nå

Vo.

Glk. <sup>15</sup>

B $\flat$  Tpt.

C Tu.

Pno.

Guit. <sub>8</sub>

El. B. <sub>8</sub>

Synth.

Vln.

Hd. Clp.

Detailed description: This is a page of a musical score for a band. It features ten staves. The vocal line (S.) is the primary focus, with lyrics in Danish: "it - te kæin vel no - en si at 'halv-part - en er min! Nå". The score is set in a key with three flats (B-flat major or D-flat minor) and a 4/4 time signature. Above the vocal staff, the chords AbMaj7, Gm7, and C7 are indicated. The piano (Pno.) part has a melodic line in the right hand and a bass line in the left hand. The guitar (Guit.) and electric bass (El. B.) parts are marked with a '8' at the beginning of their staves. The horn parts (B-flat Trumpet, C Trumpet) and string parts (Violin) are currently silent, indicated by rests. The percussion part (Hd. Clp.) also shows rests.

69

Fm7 Bb7 Eb Fm7 Bb7 Eb

S. stikk bal - din!"

Vo.

Glk. 15

Bb Tpt.

C Tu.

Pno.

Guit. 8

El. B. 8

Synth.

Vln.

Hd. Clp.

4

Ab Eb Eb C7

S. rik - e. Tenk om æil - le had - de sam - me gud som  
*mp*

Vo.

Glk.

Bb Tpt.

C Tu.

Pno. *mp*

Guit.

El. B.

Synth.

Vln.

Hd. Clp.



Fm Bb7 Ab Eb

S. 6  
æil - le tru - de på, da vil - le jord - a vær - i him - mel rik - e For *f*

Vo.

Glk. 15

Bb Tpt.

C Tu.

Pno.

Guit. 8

El. B. 8

Synth.

Vln.

Hd. Clp.

The image shows a musical score for page 5. The vocal line (S.) starts at measure 6 with the lyrics "æil - le tru - de på, da vil - le jord - a vær - i him - mel rik - e For" and a dynamic marking of *f*. The piano accompaniment (Pno.) features a melodic line in the right hand and a harmonic line in the left hand. The guitar (Guit.) and electric bass (El. B.) parts are indicated with a measure rest (8). Other instruments like Vo., Glk., Bb Tpt., C Tu., Synth., Vln., and Hd. Clp. are also present with measure rests. The score is in a key with two flats and a common time signature.

AbMaj7 Gm7 C7

S. 9  
bal - long - er er slik - e en lyt var - a var - som med. Dom

Vo.

Glk. 15

Bb Tpt.

C Tu.

Pno.

Guit. 8

El. B. 8

Synth.

Vln.

Hd. Clp.

S. 11  
går så lett sund om it - te folk lar dom i fre. *mf* Og

Vo.

15  
Glk.

Bb Tpt.

C Tu.

Pno.

Guit. 8

El. B. 8

Synth.

Vln.

Hd. Clp.

Fm7 Bb7 Eb Bb7

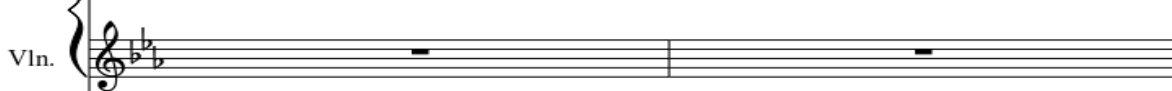
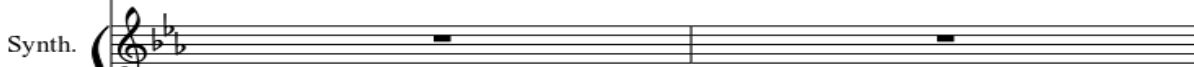
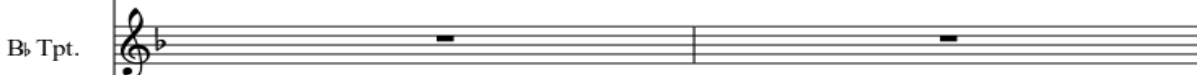
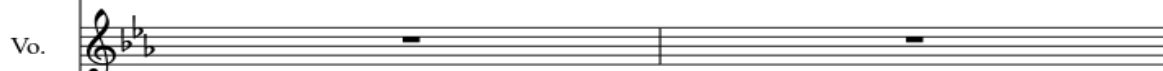
AbMaj7

Gm7

C7



it - te kæin vel no - en si at "halv-part - en er min! Nå



Fm7                      Bb7                      Eb                      Fm7                      Bb7

S. <sup>15</sup> stikk je høl i bal-long-del - en din!"

Vo.

Glk. <sup>15</sup>

Bb Tpt.

C Tu.

Pno.

Guit. <sub>8</sub>

El. B. <sub>8</sub>

Synth.

Vln.

Hd. Clp.

Eb Eb C7  
 S. 18  
 Og bal - long - en sku sve - ve høgt på  
 Vo.  
 Glk. 15 *pp*  
 B♭ Tpt.  
 C Tu.  
 Pno.  
 Guit. 8  
 El. B. 8  
 Synth.  
 Vln.  
 Hd. Clp.