

copy 1.0

Aaron Turner

The image shows a musical score for a jazz ensemble. It consists of nine staves, each labeled with an instrument name on the left. The instruments are: Flute, Oboe, Bass Clarinet, Alto Saxophone, Tenor Saxophone, Horn, C Trumpet, Trombone, and C Tuba. The score is written in 2/4 time and features a key signature of two flats (Bb and Eb). The Flute, Oboe, and Horn parts have a melodic line that starts with a quarter note, followed by eighth notes, and then a half note. The Bass Clarinet, C Trumpet, Trombone, and C Tuba parts have a similar melodic line, but the Trombone and C Tuba parts are written in the bass clef. The Alto Saxophone and Tenor Saxophone parts are mostly rests, with some notes in the final measures. A double bar line with a repeat sign is located at the end of the Flute staff.

13

Fl.

Ob.

B. Cl.

A. Sax.

T. Sax.

Hn.

C Tpt.

Trb.

C Tu.

Detailed description: This is a page of a musical score for a woodwind and brass ensemble, covering measures 13 through 16. The score is written for nine instruments: Flute (Fl.), Oboe (Ob.), Bass Clarinet (B. Cl.), Alto Saxophone (A. Sax.), Tenor Saxophone (T. Sax.), Horn (Hn.), Trumpet (C Tpt.), Trombone (Trb.), and Trombone (C Tu.). The key signature is one flat (B-flat), and the time signature is 4/4. Measures 13 and 14 are mostly rests for the woodwinds. In measure 15, the woodwinds (Fl., Ob., A. Sax., T. Sax., Hn., C Tpt.) play a melodic line starting with a quarter note G4, followed by eighth notes A4 and B4, and a quarter note C5. The brass instruments (B. Cl., Trb., C Tu.) play a harmonic accompaniment of chords: G2-B2 (m. 13), G2-B2 (m. 14), G2-B2 (m. 15), and G2-B2 (m. 16). The Flute and Oboe parts have a fermata over the final note in measure 16.

Fine

29

Fl.

Ob.

B. Cl.

A. Sax.

T. Sax.

Hn.

C Tpt.

Trb.

C Tu.

39

Fl.

Ob.

B. Cl.

A. Sax.

T. Sax.

Hn.

C Tpt.

Trb.

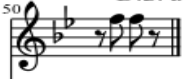
C Tu.

Detailed description: This is a page of a musical score for a woodwind and brass ensemble. It contains nine staves, each labeled with an instrument: Flute (Fl.), Oboe (Ob.), Bass Clarinet (B. Cl.), Alto Saxophone (A. Sax.), Tenor Saxophone (T. Sax.), Horn (Hn.), Cornet (C Tpt.), Trombone (Trb.), and C Trumpet (C Tu.). The score begins at measure 39. The key signature is one flat (B-flat major or D minor). The flute, oboe, and bass clarinet parts start with a whole note chord (F4, A4, C5) and then move to a half note (B4) in the next measure. The alto saxophone and tenor saxophone parts start with a whole note chord (F4, A4, Bb4) and then move to a half note (Bb4). The horn, cornet, trombone, and C trumpet parts start with a whole note chord (F4, A4, C5) and then move to a half note (B4). The flute, oboe, and bass clarinet parts have a melodic line starting in measure 40 with a quarter note (D5), followed by eighth notes (E5, F5), and ending with a quarter note (G5). The alto saxophone and tenor saxophone parts have a melodic line starting in measure 40 with a quarter note (Bb4), followed by eighth notes (C5, D5), and ending with a quarter note (E5). The horn, cornet, trombone, and C trumpet parts have a melodic line starting in measure 40 with a quarter note (D5), followed by eighth notes (E5, F5), and ending with a quarter note (G5). The score ends with a double bar line at the end of measure 40.

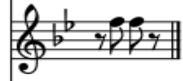
D.S. al Fine

50

Fl.



Ob.



B. Cl.



A. Sax.



T. Sax.



Hn.



C Tpt.



Trb.



C Tu.

